



» CSSD Packing Tables

These height-adjustable packing tables have mainly been designed with people packing instrument sets in the central sterilisation unit in mind.

Our packing table allows your staff to work in an ergonomic fashion as the height can be adjusted to the type of task that needs to be performed and to people's anatomy and personal preferences. Thanks to the table's flexibility, staff can get on with their business in the most optimum working position.

The packing tables are shipped dismantled and should be assembled by your distributor's or your own technical staff.

The table's flexibility also means that workstations can be arranged to make the best possible use of the available space.



» Easily height adjustable

The height of the table can be set to anything between 765 mm and 1265 mm.

The height setting control comes with three different memory settings, allowing you to program a range of positions, which will prove very convenient if the same workstation is used by a number of people. The controls are located right underneath the worktop and are easy to reach.



» Flexibility

Aside from sockets, UTP and compressed air, the superstructure can also accommodate a range of accessories.

All CSSD Packing Tables come standard with 220V electrical supplies, if another type of electrical supply is required, this should be sourced locally.

Options and accessories marked with an * are intended for mounting during the production process, not afterwards.



» Worktop

The worktop is available in various sizes and finishes. Depending on the intended use, we can offer you a choice between stainless steel and HP laminate.

» CSSD Packing Tables - no upper structure fixture possible

These tables are not suited for any upper structure fixture.



» CSSD table with stainless steel worktop

Status	Article Number	Dimensions worktop
C	17005 00086	1800 x 800 x 20 mm
C	17005 00088	1800 x 1000 x 20 mm
C	17005 00090	2000 x 800 x 20 mm
C	17005 00093	2000 x 1000 x 20 mm



» CSSD table with HP laminate worktop

Status	Article Number	Dimensions worktop
C	17005 00192	1800 x 800 x 13 mm
C	17005 00194	1800 x 1000 x 13 mm
C	17005 00196	2000 x 800 x 13 mm
C	17005 00151	2000 x 1000 x 13 mm

» CSSD Packing Tables - suitable for upper structure components

These tables are suited to install upper structure components.



» CSSD table stainless steel worktop for upper structure

Status	Article Number	Dimensions worktop
C	17005 00082	1800 x 800 x 20 mm
C	17005 00084	1800 x 1000 x 20 mm
C	17005 00046	2000 x 800 x 20 mm
C	17005 00048	2000 x 1000 x 20 mm



» CSSD table with HP laminate worktop for upper structure

Status	Article Number	Dimensions worktop
C	17005 00158	1800 x 800 x 13 mm
C	17005 00165	1800 x 1000 x 13 mm
C	17005 00198	2000 x 800 x 13 mm
C	17005 00149	2000 x 1000 x 13 mm

» Accessories for all types of CSSD Packing Tables



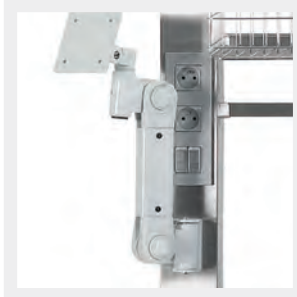
» Drawer unit including ABS modules with 3 drawers of 100 mm high

Status	Article Number	Description	Filling	Ext. Dimensions
B	17005 00233	Pre-mounted *	3 ABS modules	652 x 478 x 406 mm
B	17005 00241	For mounting afterwards	3 ABS modules	652 x 478 x 406 mm



» Flex arm for portable (maximum weight 8 kg) *

Status	Article Number	Description	Height border	Ext. Dimensions
B	14009 00001	-	25 mm	370 x 290 mm
B	14009 00037	With clamps for portable	12 mm	420 x 250 mm



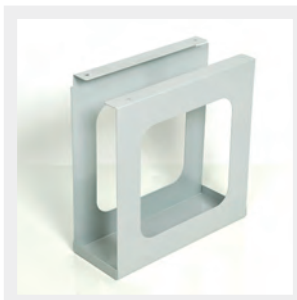
» Flex arm with VESA 100 connection for attachment of a screen *

Status	Article Number
B	14009 00019



» Retractable drawer for Keyboard *

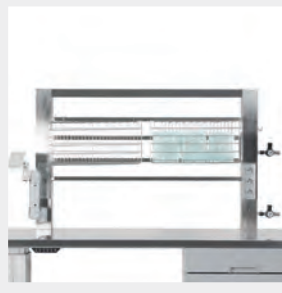
Status	Article Number	Ext. Dimensions
B	17005 00167	480 x 305 mm



» Computerholder under table *

Status	Article Number	Ext. Dimensions
B	17005 00070	184 x 495 x 498 mm

» Upper structure components



» Upper structure for baskets and trays *

Status	Article Number	Description	Ext. Dimensions
C	17005 00022	With LED-lamp	1420 x 920 mm
C	17005 00062	Without LED-lamp	1420 x 920 mm



» Upper structure for cutting device *

Status	Article Number	Description	Ext. Dimensions
C	17005 00116	With LED-lamp	1420 x 920 mm
C	17005 00142	Without LED-lamp	1420 x 920 mm
C	17005 00095	Cutting device	Length 1200 mm



» Shelf for stock of laminate sacs *

Status	Article Number	Maximum weight	Dimensions shelf
C	17005 00131	10 kg	400 x 1219 x 13 mm



» Sockets for upper structure *

Status	Article Number	Description
C	17005 00023	3x socket
C	17005 00056	2x socket + switch (mounting always on the right-hand side)
C	17005 00057	2x socket + 2x UTP connection
C	17005 00058	1x Socket + 2x 2 UTP connections
C	17005 00160	1x socket + 2x UTP connection + switch (mounting always on the right-hand side)
C	17005 00148	Filling plate for electric sockets
C	17005 00190	Filling plate for electrical socket + switch (mounting always on the right-hand side)

Options and accessories marked with an * are intended for mounting during the production process, not afterwards.

» Upper structure components



» Stainless steel hook for the attachment of baskets

Status	Article Number	Description
C	17005 00036	Oblique fixation of the wire basket
C	17005 00038	Straight fixation of the wire basket



» Sorting basket for upper structure

Status	Article Number	Ext. Dimensions
C	15007 00043	147 x 230 x 132 mm
C	15007 00042	210 x 350 x 145 mm
C	15007 00044	210 x 350 x 200 mm
C	17002 00023	Universal hook for the attachment of baskets to the upper structure