

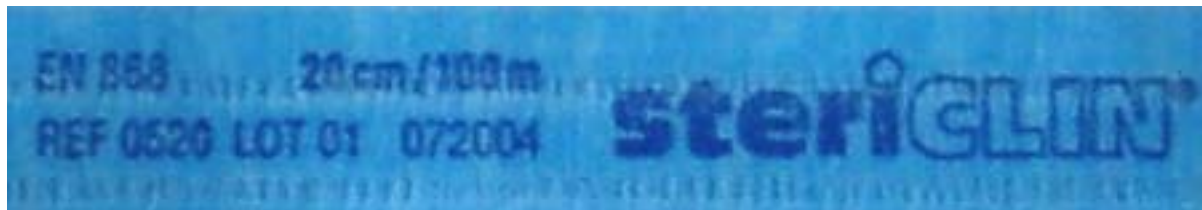
# Stericlin® Blue Line see-through non-woven packaging



**The best packaging solution for heavy,  
bulky and overlength medical devices**

# Blue Line packaging Product design (1)

- Blue Line is made of 60 g/m<sup>2</sup> non-woven with sealed on 12/40 μ strong compound film
- Heat sealable
- Sealed edges on the pouches prevent dust sedimentation
- Ref, lot-no., norm-reference, brand and size are printed on every pouch and reel



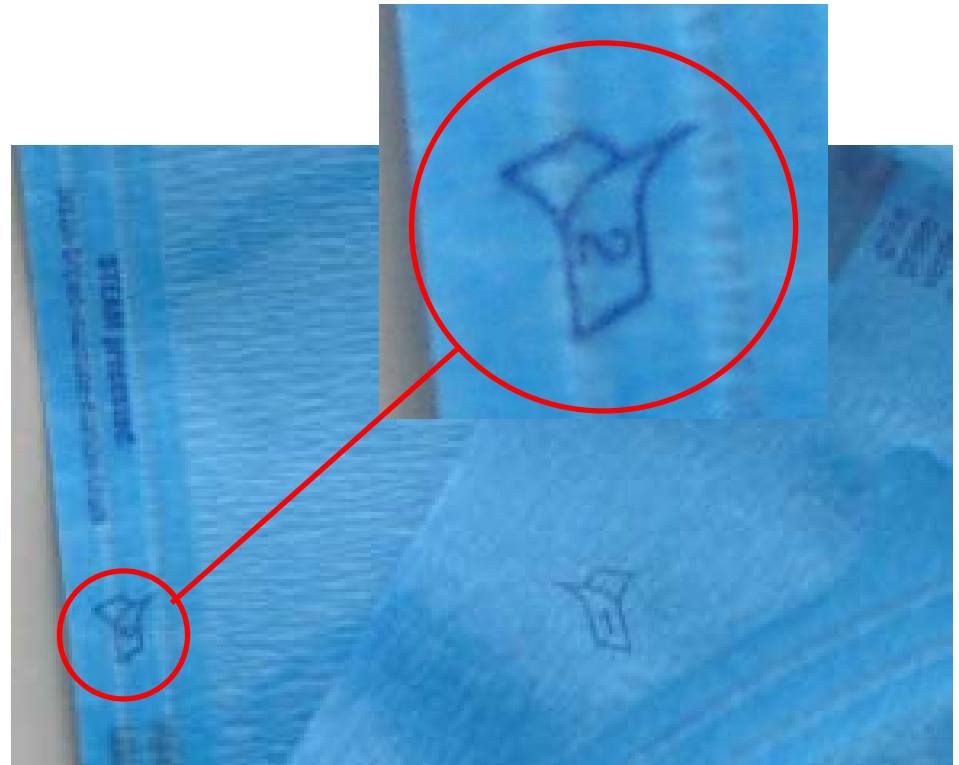
**steriGLIN®**

# Blue Line packaging Product design (2)

- Three indicators for STEAM, EO and FORM-Sterilization are printed on the frontside of each Blue Line
- Indicator colour changes during sterilization:
  - STEAM: pink to brown
  - FORM: purple to green
  - EO: uncoloured to yellow

## Blue Line packaging Product design (3)

- A symbol for peel direction is printed on the frontside
- The number in the peel symbol refers to the production lane and therefore has a 100 % traceability



# Blue Line packaging Sizes

- 5 pouches (size in cm):  
27 x 36, 32 x 45, 40 x 52, 50 x 60, 57 x 72
  - the bigger sizes are especially suitable for metal bowls, the smaller ones for trays
  
- 1 reel: 20 cm x 100 m
  - Suitable for long medical devices like retractors

# Blue Line packaging Filling

- Stericlin® Blue Line should be filled only up to three quarter of their overall space
- Sharp or pointed items should be protected separately in order to avoid damage to the package.
- Bowl type medical devices should be packed with the hollow side to the non-woven side of the pouch in order to ensure the best possible steam penetration.

# Blue Line packaging Filling (2)



# Blue Line packaging Sealing (1)

- An empty space of at least 5 cm from the seal area should be maintained in order to avoid stress on the seal. Avoid any kind of foldings - this weakens the material!
- Commonly available continuous sealing devices are most suitable. Small tolerances in temperature for each sealing device have to be fixed from case to case. The sealing temperature should be in the range of 180° - 190°C.

# Blue Line packaging Sealing (2)



# Blue Line packaging Sealing (3)



# Blue Line packaging Placement in the basket

- Smaller packs should be placed in a container (e.g. sterilization basket) so that they support one another
- Place the Blue Line film to film and non-woven to non-woven. This eases steam- and airpenetration
- Larger packs must be laid with the non-woven on the downside. This eases steam penetration and drying
- Always take care of the sterilizers manufacturers instructions for use respectively use validated configurations

# Blue Line packaging After sterilization

- Check the change of colour of the indicator after the sterilization process and look for any kind of damage on the package
- If the packs are still wet 30 minutes after the sterilization process they are not storable and must be newly packed

# Blue Line packaging Storage

- Store the pouches save from dampness, soiling, vermin, mechanical strains, extreme temperatures and ultraviolet rays
- Store seperate from unsterile goods
- Refer to DIN 58953 part 7 and other norms for storage conditions

# Blue Line packaging Opening

- To maintain an easy opening of the pouch with a heavy load there are specially marked and shaped seals on both edges of the Blue Line pouches
- Lay down the pack for the opening procedure on a table. When using pouches first open the sealed edges - these prevent dust sedimentation between non-woven and film
- Then peel apart the film and the non woven

# Blue Line packaging Advantages

- Stericlin® Blue Line was designed for stand much higher strains than normal see-through packaging
- The Blue Line combines all advantages of the paper-film-see-through-packaging with the advantages of non-woven material. For example, because of the increased softness of the non-woven material Blue Line can be filled much easier and faster than pouches made of paper and film